



Field Observation Report No. 14

Date: 5/19/10 - Tile Punch List

Project: Bharatiya Temple

Observer: Douglas Necci AIA

1. Tile waterproofing – fiberglass mesh embedded in Laticrete must cover all joints at steps and walls. Mesh at steps is incomplete. Additional coat of Laticrete is needed on mesh (no open cells).
2. Men's and ladies vestibules are scheduled to receive tile.
3. Tile used on window jambs is not as selected. Remove and replace as agreed.
4. Sill projections at alcoves must be 7" - 8" to accept trim.
5. Thresholds at rest room doors at corridor to be 2" wide, located below door, flush with tile, 1/2" max above carpet. Threshold at vestibule doors can be tile accent.

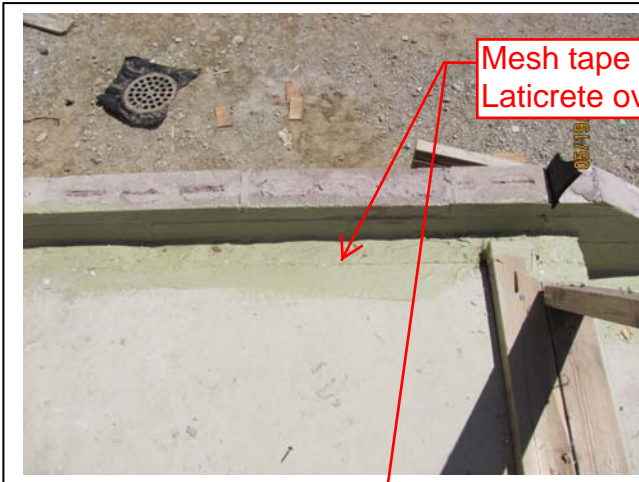




Tile color to match sill.
Remove and replace
jamb & head.



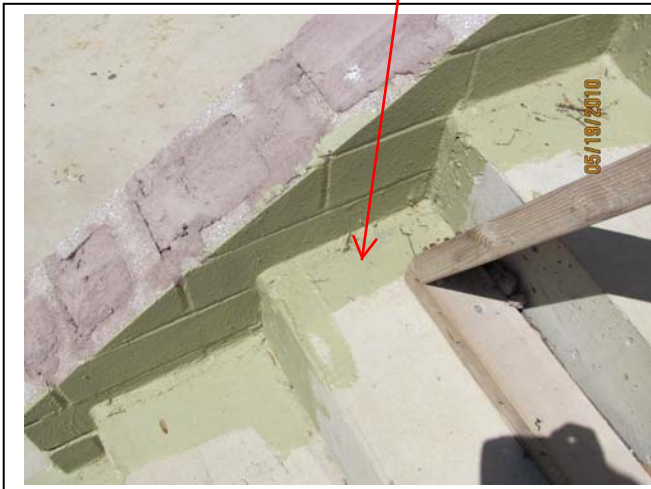
Additional coat of
Laticrete needed.



Mesh tape embedded in
Laticrete over all joints



05/19/2010



05/19/2010



Extend Laticrete &
mesh to end of
landing.